

EGRSE



International Journal of Exploration Geophysics, Remote Sensing and Environment



**The undermined area being on the periphery of the town Orlová.
The before developed region dropped up to 15 m and formed
a drainless subsidence trough, Czech Republic.**

EXPLORATION GEOPHYSICS, REMOTE SENSING AND ENVIRONMENT

Journal "Exploration Geophysics, Remote Sensing and Environment" (EGRSE) publishes original contributions dealing with:

- **application of geophysical methods in geology, engineering geology, hydrogeology,**
 - **environment and geothermal energy,**
 - **remote sensing and its application in geology, geodesy, GIS and ecology,**
 - **tectonophysics, physics of the interior of the Earth, seismology, seismotectonics and seismic hazard**
 - **problems of near surface geology**
-

Editorial board:

Chairman:

BLÁHA Pavel, Assoc. Prof. RNDr. DrSc., GEOtest, a.s., Brno, Czech Republic

Members:

GAJDOŠ Vojtech, Assoc. Prof. RNDr., CSc., Comenius University, Faculty of sciences, Bratislava, Slovakia (retired).

IDZIAK Adam, Prof. zw. Dr. hab., University of Silesia, Faculty of Earth Sciences, Sosnowiec, Poland.

JIRÁNKOVÁ Eva, Assoc. Prof. Ing., Ph.D., VŠB-Technical University of Ostrava, Faculty of Mining and Geology, Czech Republic.

KALÁB Zdeněk, Prof. RNDr., CSc., Institute of Geonics of the Academy of Sciences of CR, v.v.i., Ostrava, Czech Republic.

PALACKÝ Jiří, Mgr., Ph.D., Geological Survey of Canada, Ottawa, Canada, (retired).

RYŠAVÝ František, RNDr., Karotáž a cementace s.r.o., Hodonín, Czech Republic, (retired).

VLČKO JÁN, Assoc. Prof. RNDr., Ph.D., Comenius University, Faculty of Sciences, Bratislava, Slovakia.

Editor in chief:

RYŠAVÝ František, RNDr.

All correspondence to Exploration Geophysics, Remote Sensing and Environment Journal; Frantisek Ryšavý, Lesní 3, 695 03 Hodonín, Rysavy.Frantisek@seznam.cz

EGRSE is the official Journal of ČAAG - the Czech Association of Geophysicists, issued twice a year. Deadlines for submission of articles are: January 10; July 10. ČAAG is associated with EAGE from 1997.

Issued price The single issue amounts to 250 Kč. Two issues present 450 Kč, exclusive of postage. Journal is distributed by the editors.

Advertising: Advertisements are accepted. Information on prices can be received from the editors.

COVER: The undermined area being on the periphery of the town Orlová. The before developed region dropped up to 15 m and formed a drainless subsidence trough, Czech Republic. Author: Ing. Petr Waclawik, PhD.

© ČAAG - PRAHA, Czech Republic; IČO: 60460253

Acknowledgements

EGRSE thanks the following contributor for its financial support:

- **Council of Scientific Societies of the Czech Republic**

Editorial Board

All contributions have been reviewed

CONTENT - OBSAH

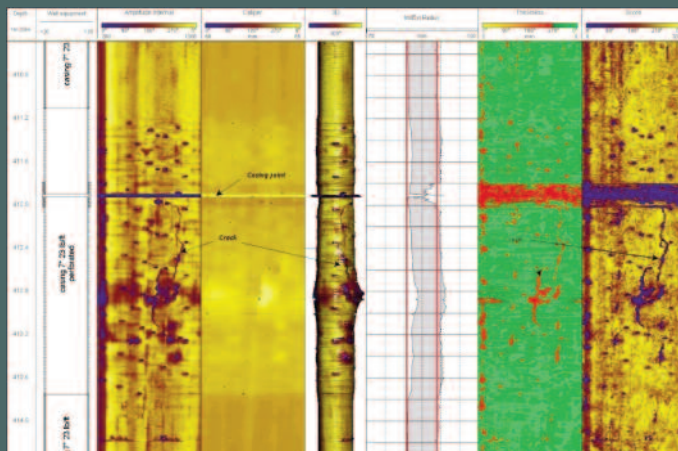
Kovanič L., Blištan P., Neméth Z. TLS Use for the Geological Structures Documentation <i>Využitie TLS pri dokumentácii geologických štruktúr</i>	1
Ścigala R. The Comparison of Identification Methods of W. Budryk – S. Knothe – Theory Parameter „c“ on the Practical Example <i>Srovnání identifikačních metod podle W. Budryk – S. Knothe – Teorie parametru „c“ v praxi</i>	11
Strzałkowski P. Discontinuous Deformations as a Result of horizontal Deformations <i>Nespojité deformace jako výsledek horizontálních deformací</i>	18
Ryšavý F. Method of the Controlled Current Regulation – Induced Polarization <i>Metoda kontrované regulace proudu – vynucená polarizace</i>	25
Ryšavý F. Method of the Controlled Current Regulation – the Static and Selective SP-potentials <i>Metoda kontrované regulace proudu – statické a selektivní SP-potenciály</i>	38

Instructions for authors





KAROTÁŽ A CEMENTACE s.r.o. HODONÍN



The company Karotáž a cementace, s.r.o.

Provides services with prospecting and production of oil and gas, reposition of gas in the underground gas storages and geothermal prospecting.

Well-logging activities

- Perforating activities
- Cementation activities
- Testing activities
- Intensification activities
- Drawdown tests
- Gravel packing



Karotáž a cementace, s.r.o., 695 01 Hodonín, Velkomoravská 2606/83, tel.: 518 355 930, fax: 518 353 071
kac@karotaz.cz, www.karotaz.cz